

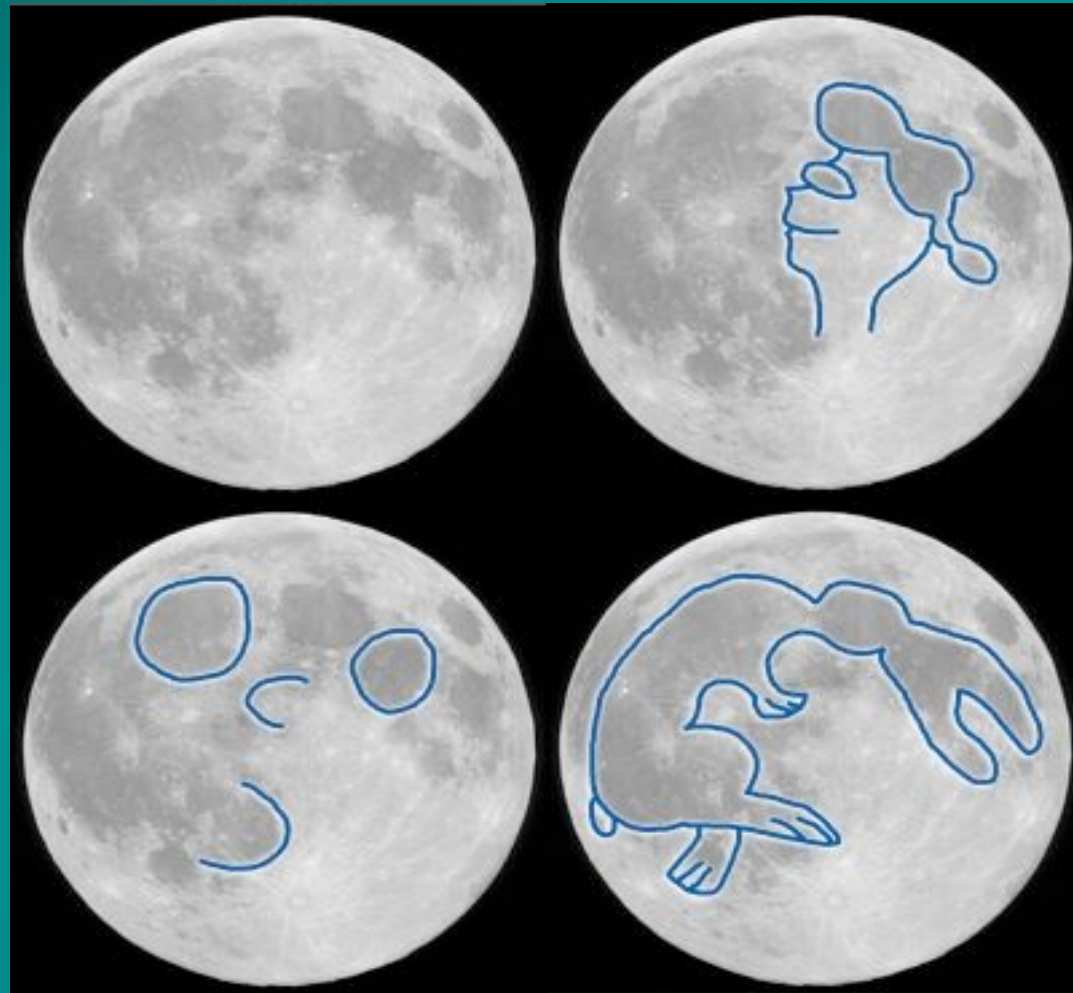
IGT Indianapolis Research

Matrixing

We're Hard-Wired To See Faces

- “As soon as the infant can see, it recognises faces and we know that this skill is hardwired in our brains... As an inadvertent side effect, the pattern-recognition machinery in our brains is so efficient in extracting a face from a clutter of other detail that we sometimes see faces where there are none.” – Carl Sagan, *The Demon-Haunted World*.

The Man in the Moon



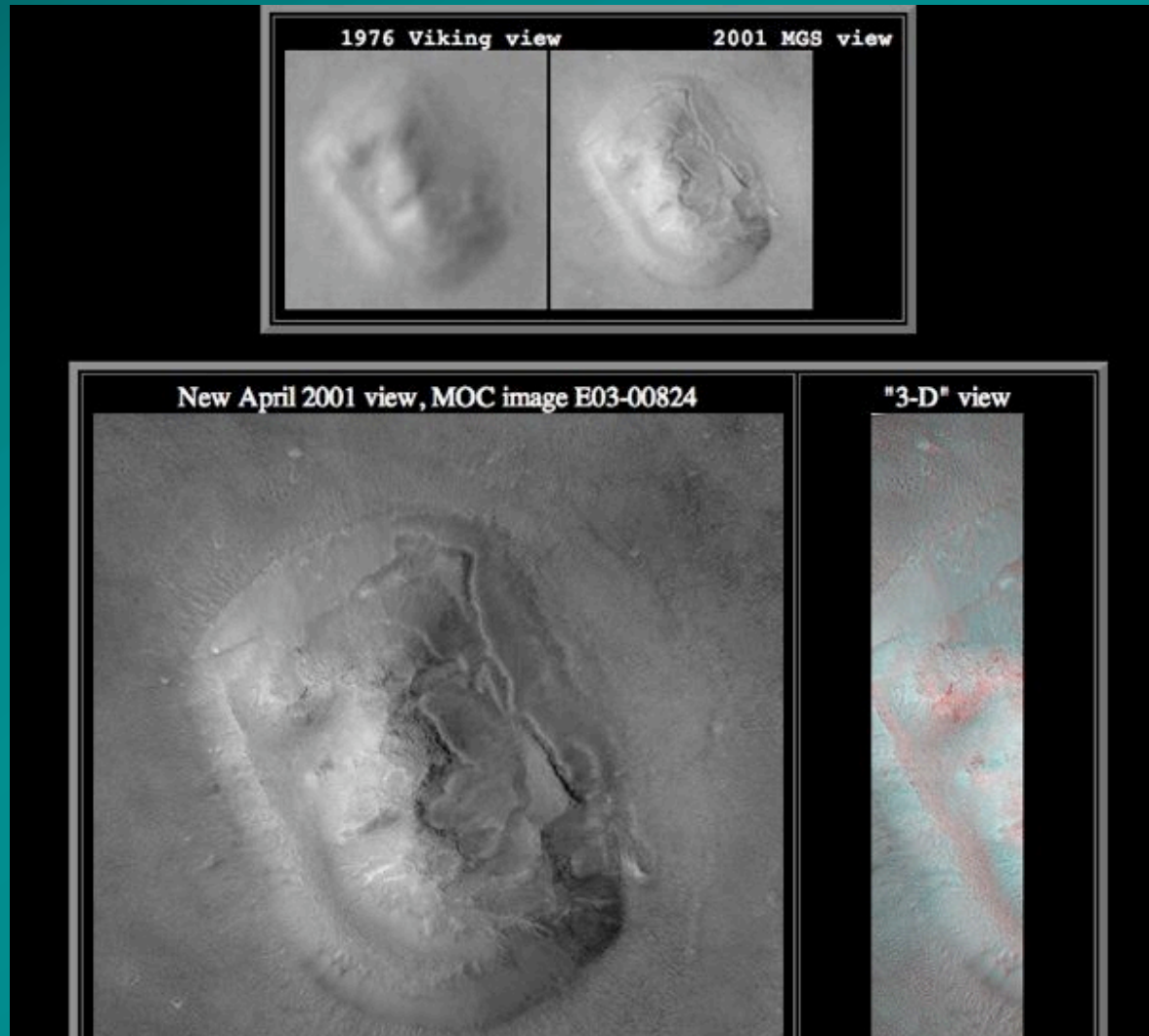
- “The most common image is the Man in the Moon. Of course, it doesn’t really look like a man. Its features are lopsided, warped, drooping... And what expression does the mouth convey? An “O” of surprise? A hint of sadness, even lamentation? ... Certainly the face is too round. The ears are missing... Nevertheless, every time I look at it, I see a human face.” – Carl Sagan, *The Demon-Haunted World*.

The Face on Mars

- In 1976, Viking I sent back this photo of some mesas on Mars, one of which strongly resembles a human face:



In 2001, the Mars Global Surveyor took more detailed pictures....



Samurai Crab!

The samurai crab, *Dorippe* (now *Heikea*) *japonica*, showing on its back the remarkable resemblance to a scowling human face formed by grooves and elevated areas of the carapace (shell). This specimen is a male collected in Ariake Bay, off Kyushyu, Japan, in 1968, on loan to the Natural History Museum from the Rijksmuseum van Natuurlijke Historie, Leiden, The Netherlands. Total width across the crab's back at its widest point (the "cheeks" of the face) is only 20.4 mm (0.8 inches). The last two legs on each side are reduced and claw-like for carrying objects. In this specimen, the second walking leg on the left side has been lost and regenerated, accounting for its small size compared to the right side legs.





News Front Page



[Africa](#)

[Americas](#)

[Asia-Pacific](#)

[Europe](#)

[Middle East](#)

[South Asia](#)

[UK](#)

[Business](#)

[Health](#)

[Science/Nature](#)

[Technology](#)

[Entertainment](#)

[Have Your Say](#)

[In Pictures](#)

[Country Profiles](#)

[Special Reports](#)

[Programmes](#)

RELATED BBC SITES

Last Updated: Tuesday, 23 November, 2004, 11:54 GMT

 [E-mail this to a friend](#)

 [Printable version](#)

'Virgin Mary' toast fetches \$28,000

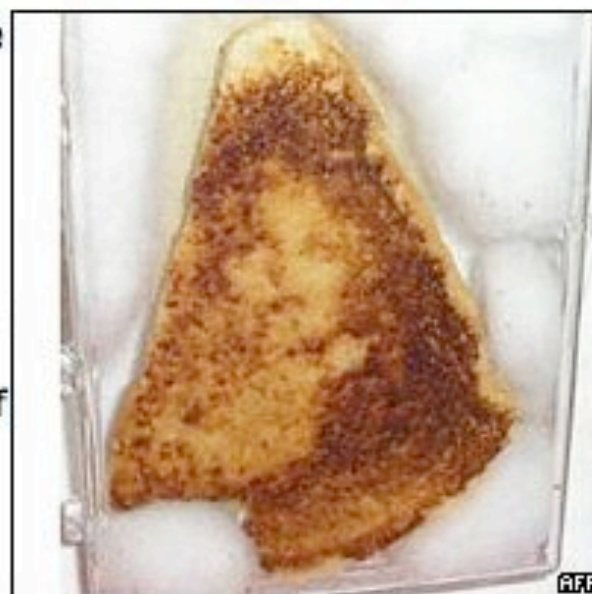
A decade-old toasted cheese sandwich said to bear an image of the Virgin Mary has sold on the eBay auction website for \$28,000.

An internet casino confirmed it had purchased the sandwich, saying it had become a "part of pop culture".

Goldenpalace.com says it will take the sandwich on world tour before selling it and donating the money to charity.

Diane Duyser, from Florida, says the sandwich has never gone mouldy since she made it 10 years ago.

By the time the sandwich auction closed on Monday the sale had received over 1.7 million hits on the auction site.



The toast is not intended for consumption

Pareidolia

- Describes a psychological phenomenon involving a vague and random stimulus (often an image or sound) being mistakenly perceived as recognizable. Common examples include images of animals or faces in clouds, seeing the man in the moon, and hearing messages on records played in reverse. - Wikipedia

Rorschach inkblot test

- “The Rorschach is used to help assess personality structure and identify emotional problems. Like other projective techniques, it is based on the principle that subjects viewing neutral, ambiguous stimuli will project their own personalities onto them, thereby revealing a variety of unconscious conflicts and motivations.”

- Encyclopedia of
Psychology



Three ways to tell if you're matrixing according to Grant Wilson of TAPS:

First: "Pictures of trees, fields, cluttered up closets, mirrors and glass are a few of the prime candidates for matrixing issues. They include very complex shapes and patterns and, therefore, a high potential for the mind to construct a face or body out of something that isn't there."

Three ways to tell if you're matrixing according to Grant Wilson of TAPS:

- “Second, look at the potential face or figure. If it is truly paranormal then, the face or figure would be made up of its own material, not the material that is comprising the picture. Let me explain; if the picture is of a forest, and your mind tells you that there is a face in it. Look to see if the face is made up of the branches and leaves from the trees in the picture, or if the face is separated from them and a completely separate material from the trees.”

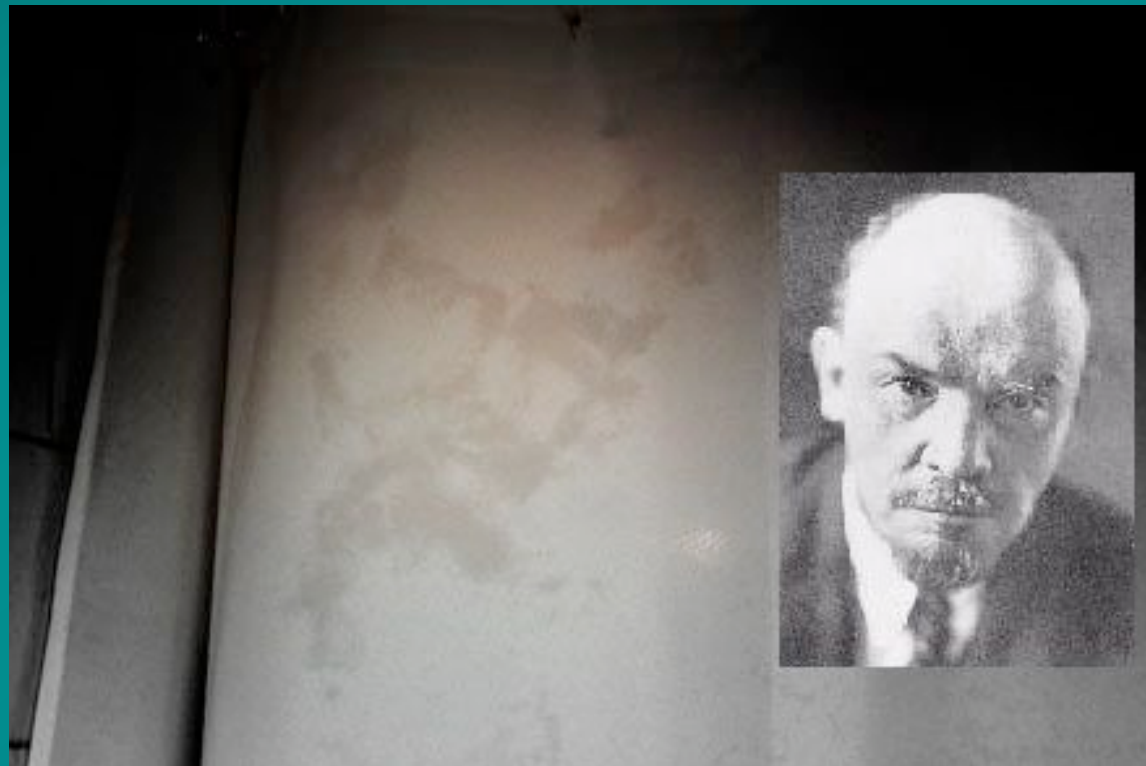
Three ways to tell if you're matrixing according to Grant Wilson of TAPS:

Third, once you have eliminated the top two issues, look at the face or figure as a real face or figure. Look at the proportions of the face. Are they "cartoony" and disproportionate or are they realistic? [Grant has] art training and can easily determine if a face has realistic proportions or not. If you do not have this training, you can go to any art supply store and pick up a book that explains these proportions.

<http://www.the-atlantic-paranormal-society.com/arthunters/photo-matrixing.htm>

V.I. Lenin in a shower curtain?

- “Just Another Face in the Crowd”,
<http://www.badastronomy.com/bad/misc/lenin.html>



References

- Carl Sagan (1996). The Demon-Haunted World.
- “Just Another Face in the Crowd”,
<http://www.badastronomy.com/bad/misc/lenin.html>
- Martin, J. W. (1993). The Samurai Crab. Terra 31 (4): 30–34.
- Gale Encyclopedia of Psychology, 2nd ed. Gale Group, 2001.
- <http://en.wikipedia.org/wiki/Pareidolia>
- http://en.wikipedia.org/wiki/Face_on_mars
- <http://news.bbc.co.uk/2/hi/americas/4034787.stm>
- <http://www.the-atlantic-paranormal-society.com/arthunters/photo-matrixing.htm>